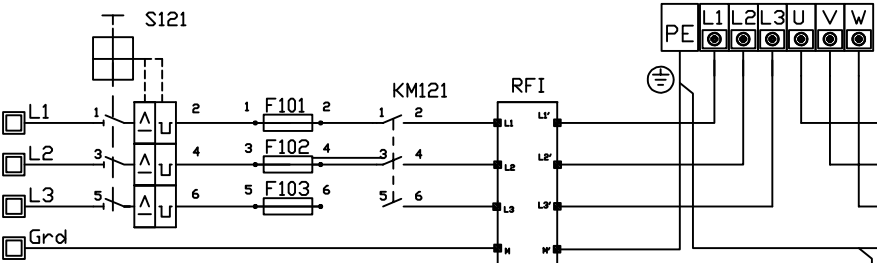
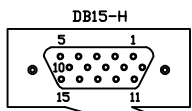
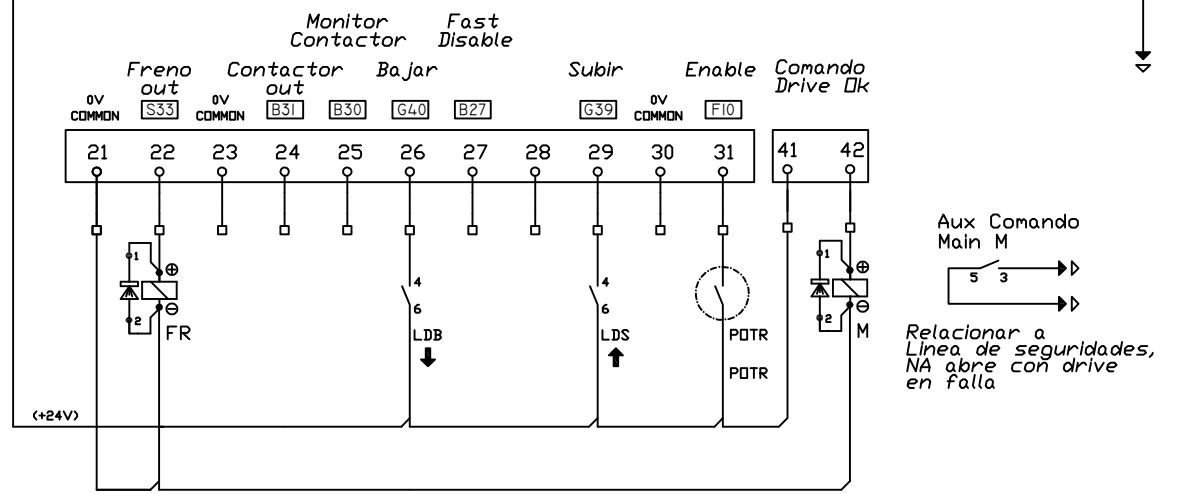
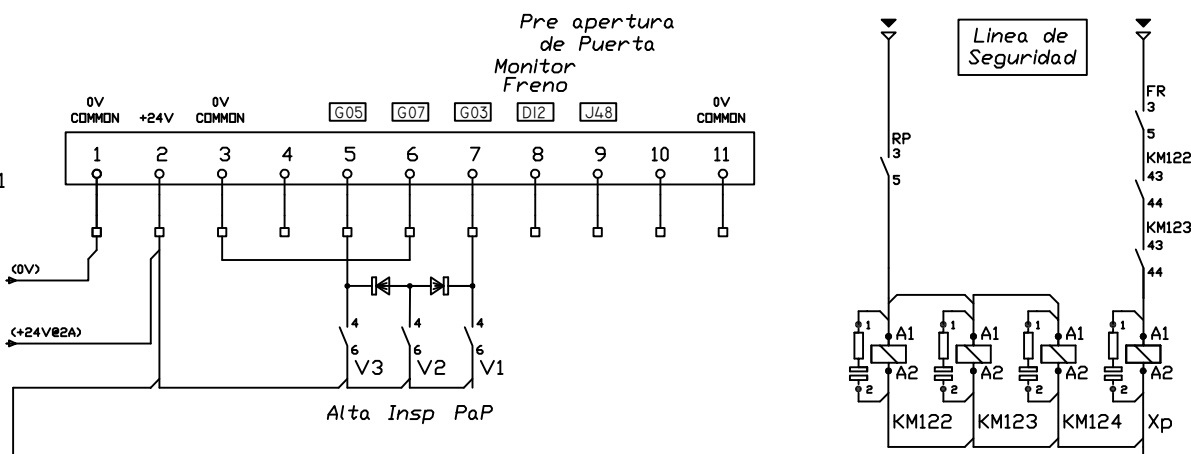
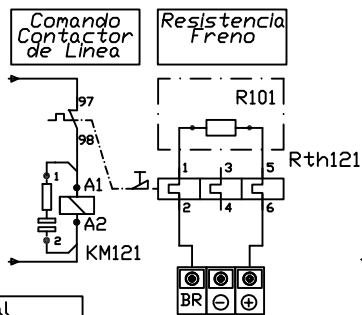


Term.31	Term.29	Term.28	Term.5	Term.7	Velocidad	Param.
Enable	Subir	Bajar	Alta	PaP	0 Stop	
X	X	X	X	X	Nivelacion	G01
X	X	X	X	X	Alta	G05
X	X	X	X	X	PaP	V2
X	X	X	X	X	Inspeccion	G07

R101

Modelo	Pot. Kw/Hp	I.Out SI HD	Res. Min.	Res. Dpt.	Res. Watt	Res.Total Watt
E300-044-00150	5,5/7,5	15	34	60	400	2x300hms Serie
E300-044-00172	7,5/10	17,2	34	60	400	2x300hms Serie
E300-054-00270	11/15	27	31,5	45	600	3x150hms Serie
E300-054-00300	15/20	30	18	30	800	2x300//Serie
E300-064-00350	15/20	35	18	30	800	2x300//Serie
E300-064-00420	18,5/25	42	17	22,5	1200	3x150Serie-//
E300-064-00470	22/30	47	17	22,5	1200	3x150Serie-//
E300-074-00660	30/40	66	9.0	15	1600	4x300//Serie
E300-074-00770	37/50	77	9.0	15	1600	4x300//Serie
E300-074-01000	45/60	100	7.0	15	1600	4x300//Serie

TERMINAL	AB	AB SERVO	SC HIPERFASE	SC ENDAT SC SSI	ENDAT BISS SSI
1	A	A	COS	A (Cos)	DATA
2	A\	A\	COS REF	A\ (Cos\)	DATA\
3	B	B	SIN	B (SIN)	CLK
4	B\	B\	SIN REF	B\ (SIN\)	CLK\
5	Z	Z	DATA	DATA	FREEZE
6	Z\	Z\	DATA\	DATA\	FREEZE
7		U			
8		U\			
9		V			
10		V\			
11		W		CLK	
12		W\		CLK\	
13			+V		
14			0V		
15					

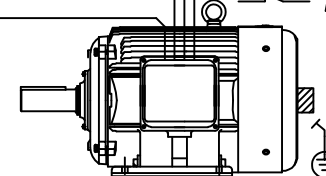


ENTRADA TRIFASICA (3x380V)

FILTRO Disminucion de Harmónicos

FERRITE RING Arrollar una vuelta por fase

Shorting Contactor KM124



Switch monitor de freno activado. Si no existe utilizar auxiliar de Xp

Aux Comando Main M
Relacionar a Linea de seguridades, NA abre con drive en falla

Equipos Tamaño 6 en adelante agregar Alimentacion Aux.

ALL RIGHTS RESERVED - NO PART OF THIS DRAWING MAY BE REPRODUCED WITHOUT OUR WRITTEN PERMISSION